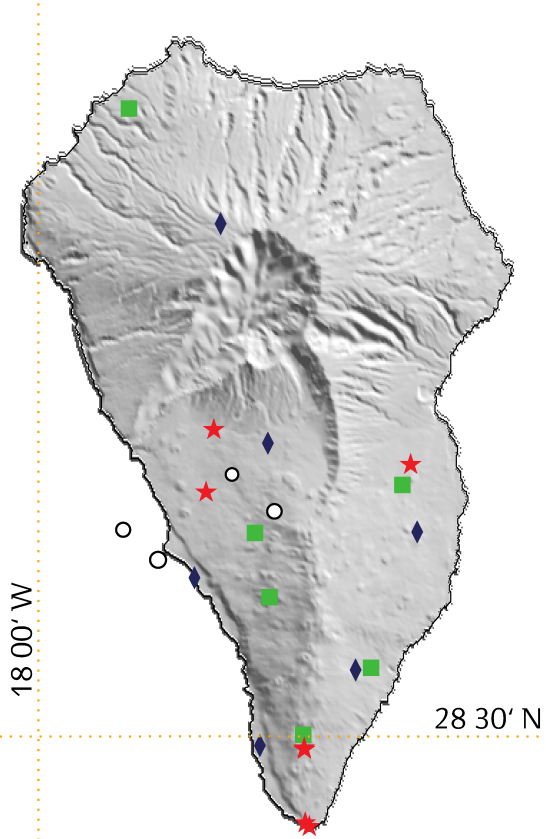


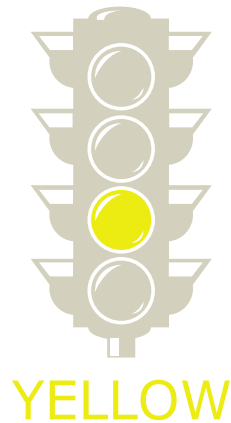


Weekly information chart of the seismic-volcanic activity on the island of La Palma

N. earthquakes: 4
Energy: 0.003 GJ
Max. magnitude: 1.9

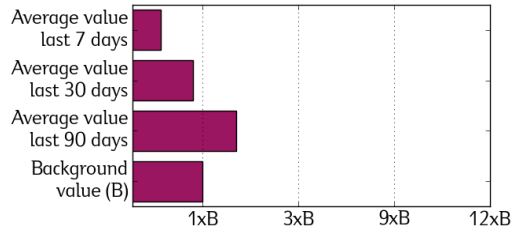


Volcanic Semaphore
PEVOLCA

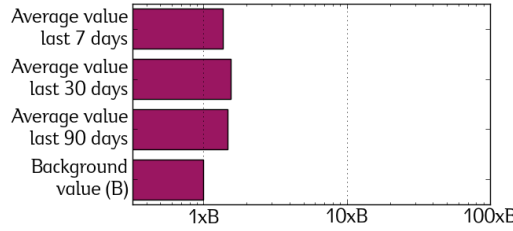


Special plan of civil protection and emergency response for volcanic risk in the Canary Islands (PEVOLCA)

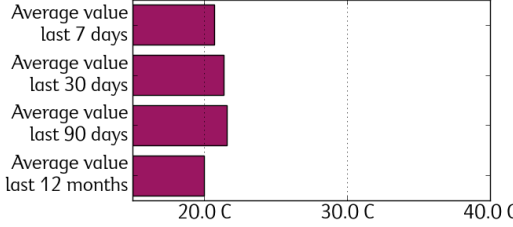
Carbon Dioxide (CO₂) Efflux - LPG04



Seismic Energy Released



Temperature Variations - LPG04



Vertical Displacement - ARID



Seismicity

(Magnitude Richter Scale)
○ < 1.0
1.0 ○ < 2.0
2.0 ○ < 3.0
3.0 ○ < 4.0
4.0 ○

Permanent Networks

- Seismic Station
- ◆ GPS Station
- ★ Geochemical Station Thermometric Station

OBSERVATIONS: The meaning of the semaphore positions are: GREEN = Carry out your activities normally; YELLOW = Be aware of the communications of civil protection authorities; ORANGE = Follow the instruction of the authorities; RED = Total evacuation of affected population. Following the indications of PEVOLCA, we inform that the semaphore is currently in YELLOW position. This report is updated at 00:00 of 15 March 2024. The diffuse carbon dioxide flux, the released seismic energy and the vertical component of the ground displacement are shown in this graphical report as a multiple of the background values (B). The soil temperature is shown as variation with respect to the average value of the last 12 months.