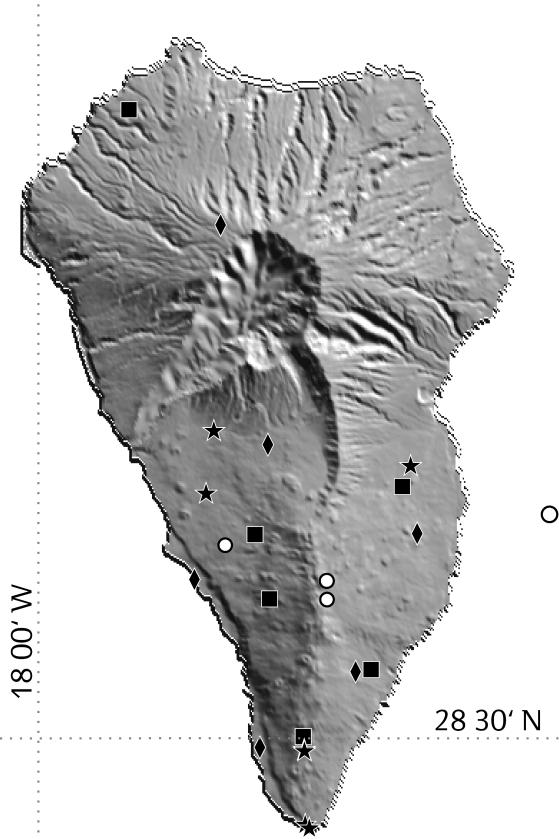




N. earthquakes: 4  
Energy: 0.001 GJ  
Max. magnitude: 1.7

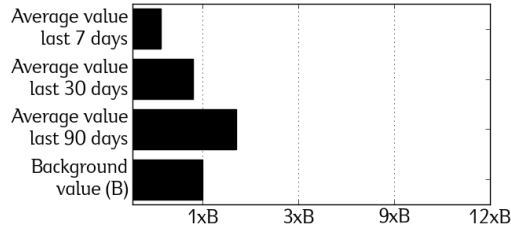


### Volcanic Semaphore PEVOLCA

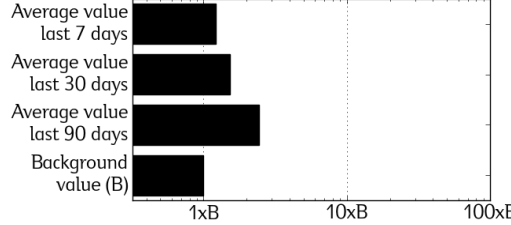
YELLOW

*Special plan of civil protection and emergency response for volcanic risk in the Canary Islands (PEVOLCA)*

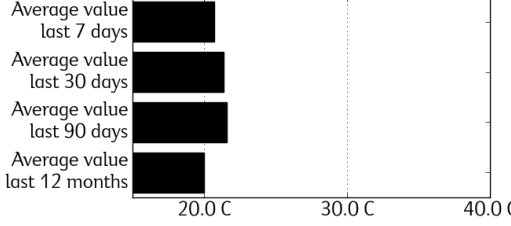
Carbon Dioxide (CO<sub>2</sub>) Efflux - LPG04



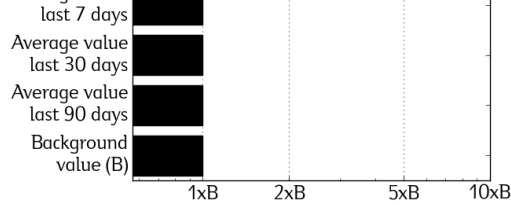
Seismic Energy Released



Temperature Variations - LPG04



Vertical Displacement - ARID



Seismicity	Permanent Networks
(Magnitude Richter Scale)	
o < 1.0	■ Seismic Station
1.0 o < 2.0	◆ GPS Station
2.0 o < 3.0	★ Geochemical Station
3.0 o < 4.0	Thermometric Station
4.0 o	

OBSERVATIONS: The meaning of the semaphore positions are: GREEN = Carry out your activities normally; YELLOW = Be aware of the communications of civil protection authorities; ORANGE = Follow the instruction of the authorities; RED = Total evacuation of affected population. Following the indications of PEVOLCA, we inform that the semaphore is currently in YELLOW position. This report is updated at 00:00 of 02 May 2025. The diffuse carbon dioxide flux, the released seismic energy and the vertical component of the ground displacement are shown in this graphical report as a multiple of the background values (B). The soil temperature is shown as variation with respect to the average value of the last 12 months.