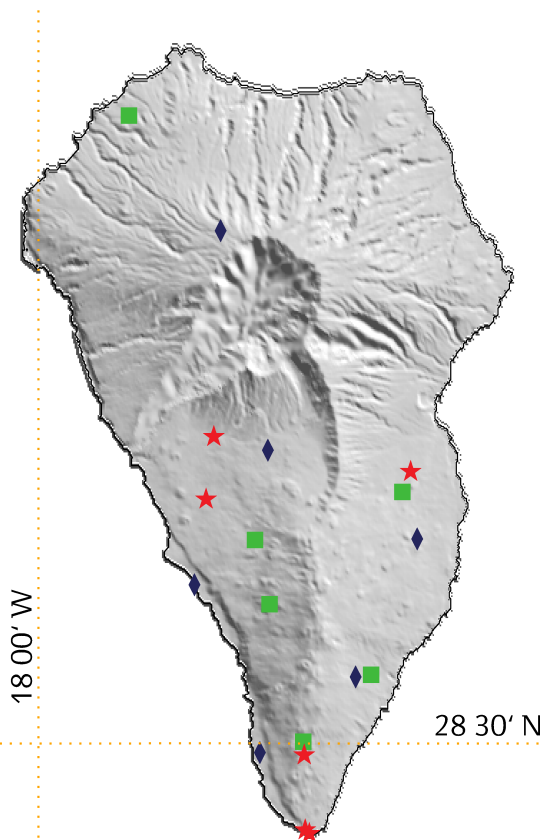




Weekly information chart of the seismic-volcanic activity on the island of La Palma

N. earthquakes: 0

Energy: 0.000 GJ



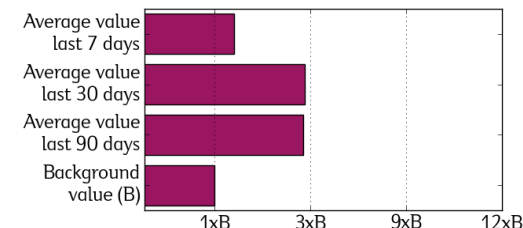
## Volcanic Semaphore PEVOLCA



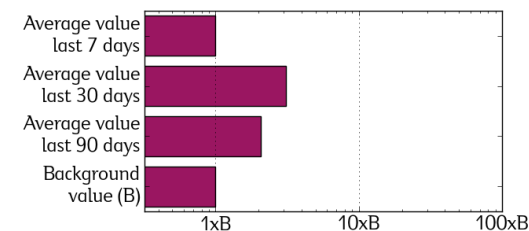
Please carry on your daily activities as normal.  
Please know your physical environment and what to do in case of volcanic activity.

*Special plan of civil protection and emergency response for volcanic risk in the Canary Islands (PEVOLCA)*

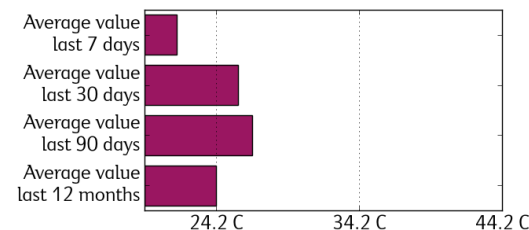
### Carbon Dioxide (CO<sub>2</sub>) Efflux - LPG04



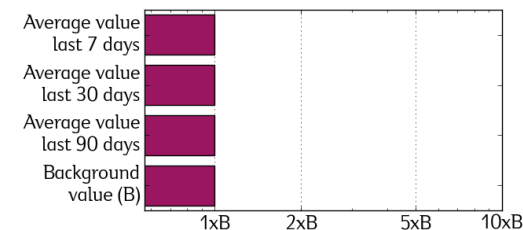
### Seismic Energy Released



### Temperature Variations - LPG04



### Vertical Displacement - MAZO



#### Seismicity

(Magnitude Richter Scale)

- < 1.0 ○
- 1.0 ○ < 2.0
- 2.0 ○ < 3.0
- 3.0 ○ < 4.0
- 4.0 ○

#### Permanent Networks

- Seismic Station
- ◆ GPS Station
- ★ Geochemical Thermometric Station

OBSERVATIONS: The meaning of the semaphore positions are: GREEN = Carry out your activities normally; YELLOW = Be aware of the communications of civil protection authorities; ORANGE = Follow the instruction of the authorities; RED = Total evacuation of affected population. Following the indications of PEVOLCA, we inform that the semaphore is currently in GREEN position; therefore you can carry out your activities normally. This report is updated at 00:00 of 30 October 2020. The diffuse carbon dioxide flux, the released seismic energy and the vertical component of the ground displacement are shown in this graphical report as a multiple of the background values (B). The soil temperature is shown as variation with respect to the average value of the last 12 months.